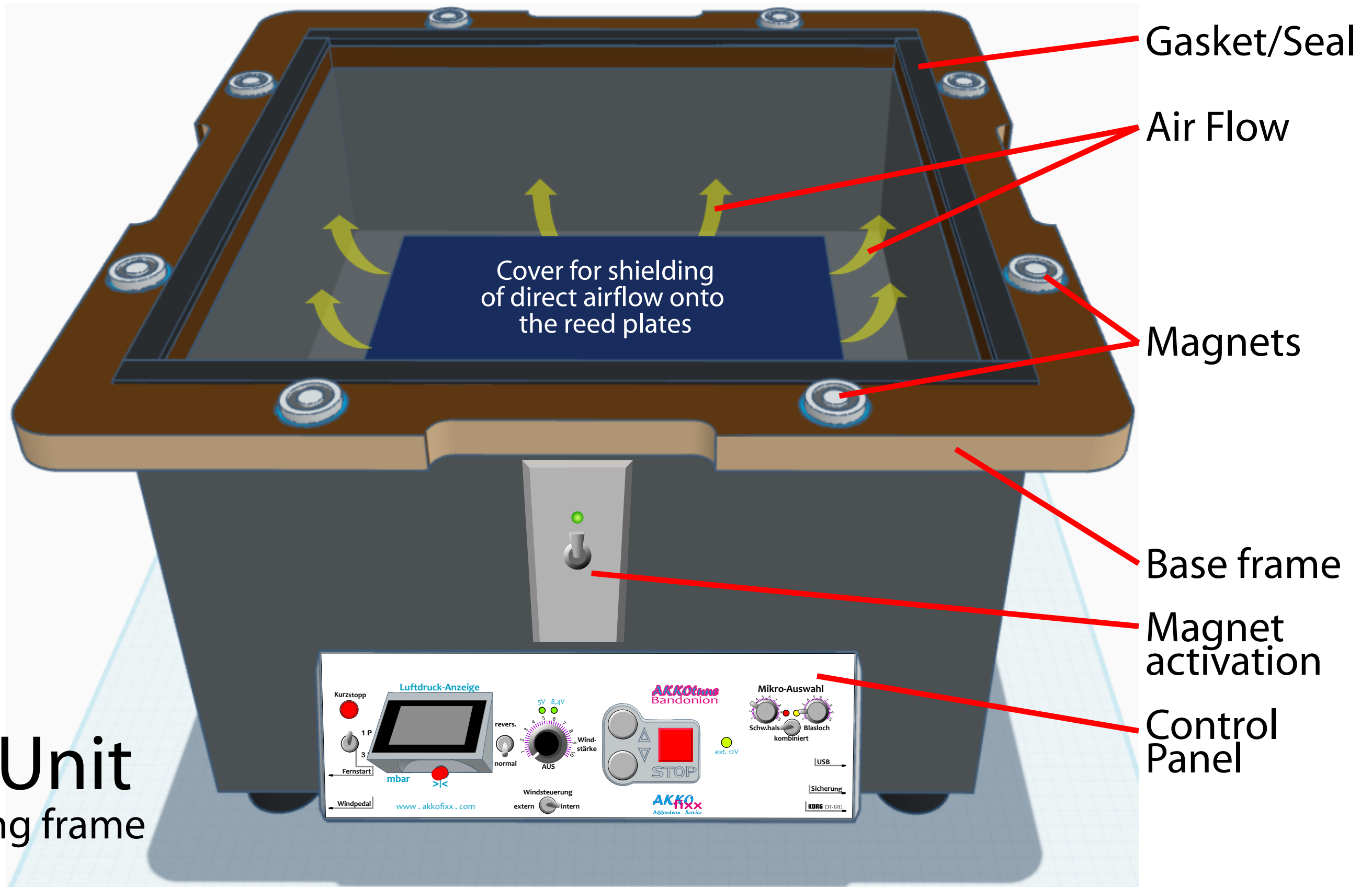
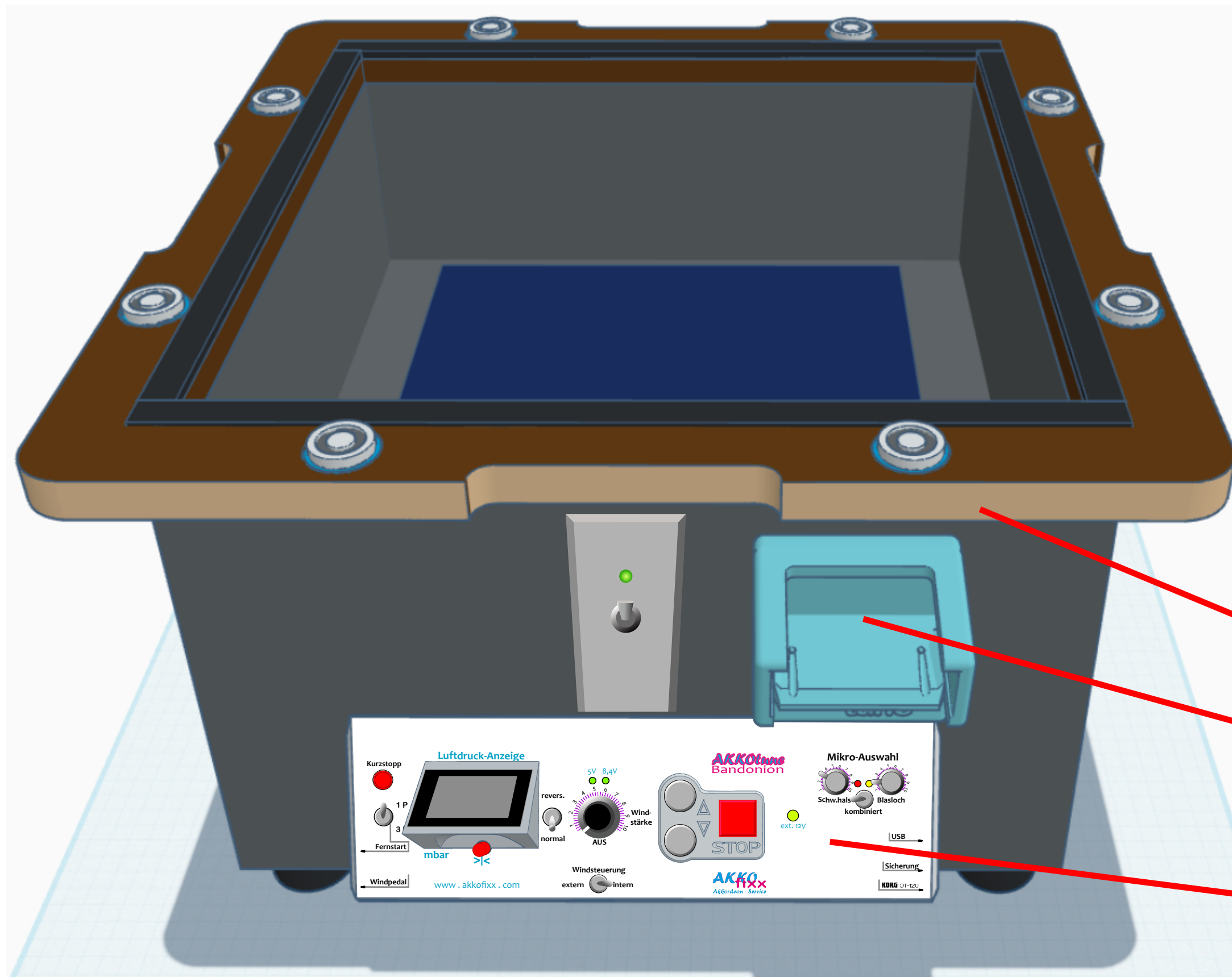


# AKKÖtune BANDONEON



Basic Unit  
w/o turning frame

# AKKOtune BANDONEON



Basic Unit  
w/o truning frame  
w/ option OT-120

Korg OT-120  
Chromatic Tuner  
in cradle

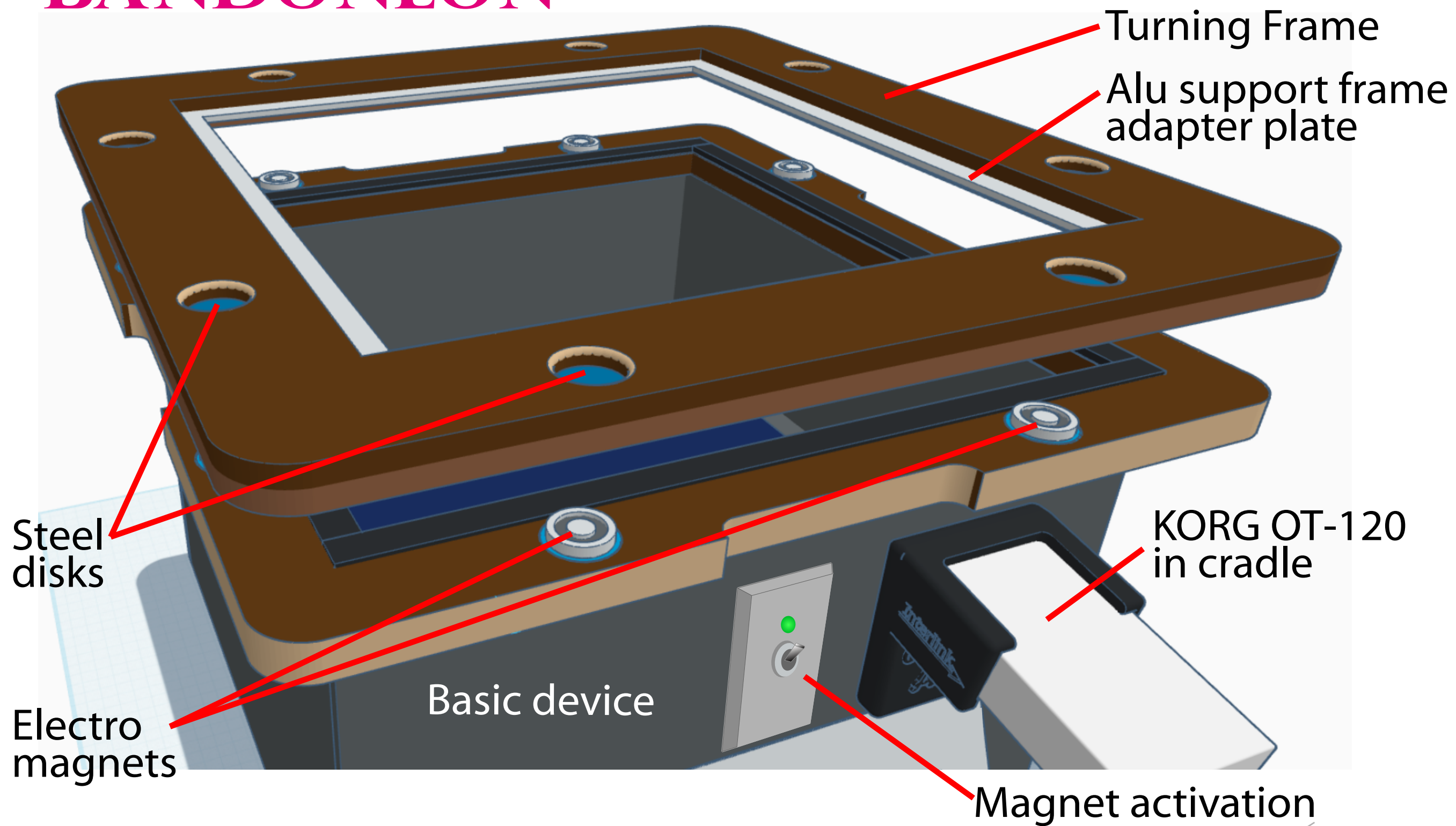


Basic Frame

Cradle for  
Korg OT-120  
Chromatic Tuner

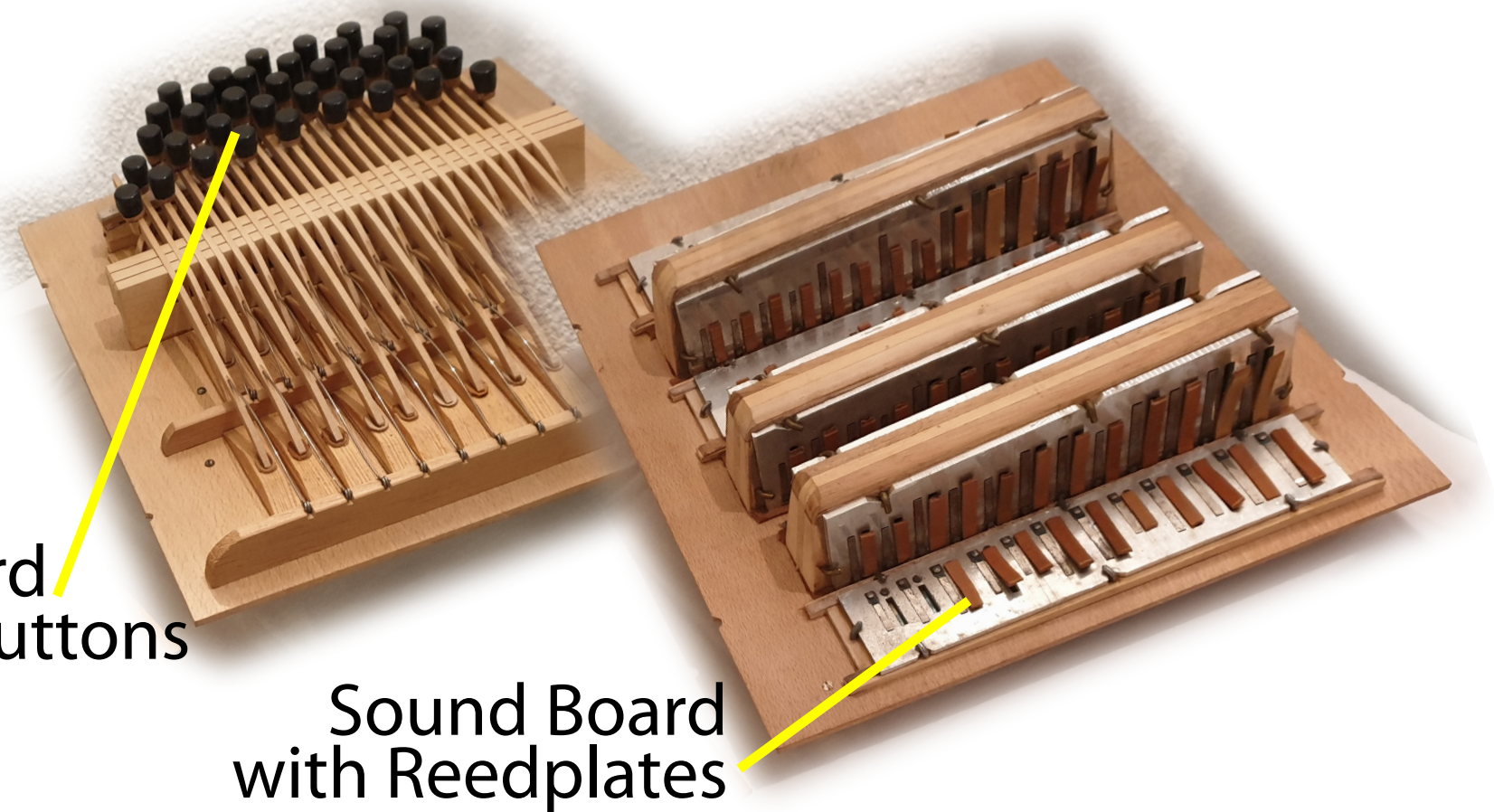
Control Panel

# AKKÖtune BANDONEON





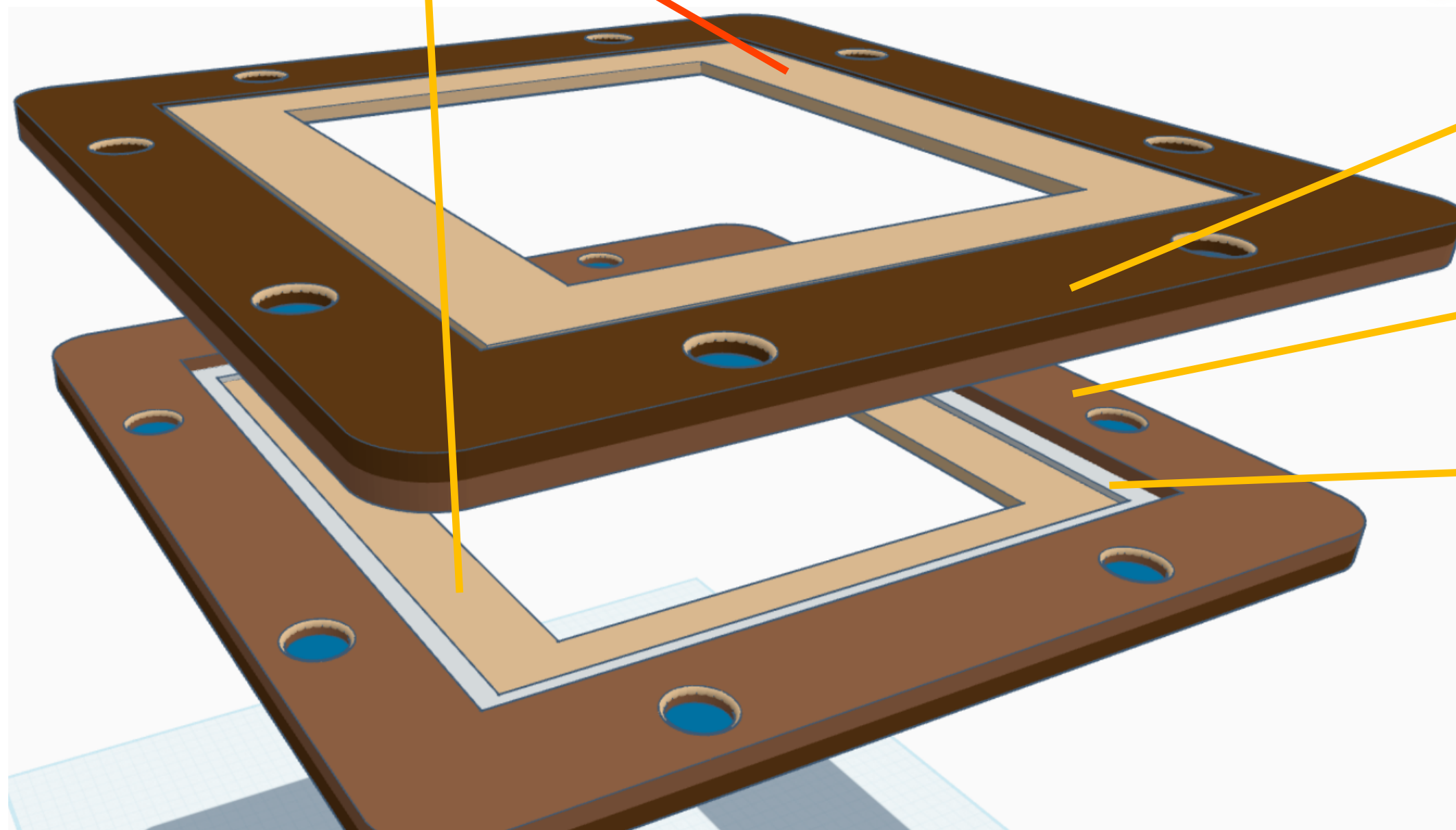
# AKKÖtune BANDONEON Turning Frame



Adapter plate for  
Sound Board

Sound Board  
with play buttons

Sound Board  
with Reedplates



Turning Frame with  
Adapter Plate on top

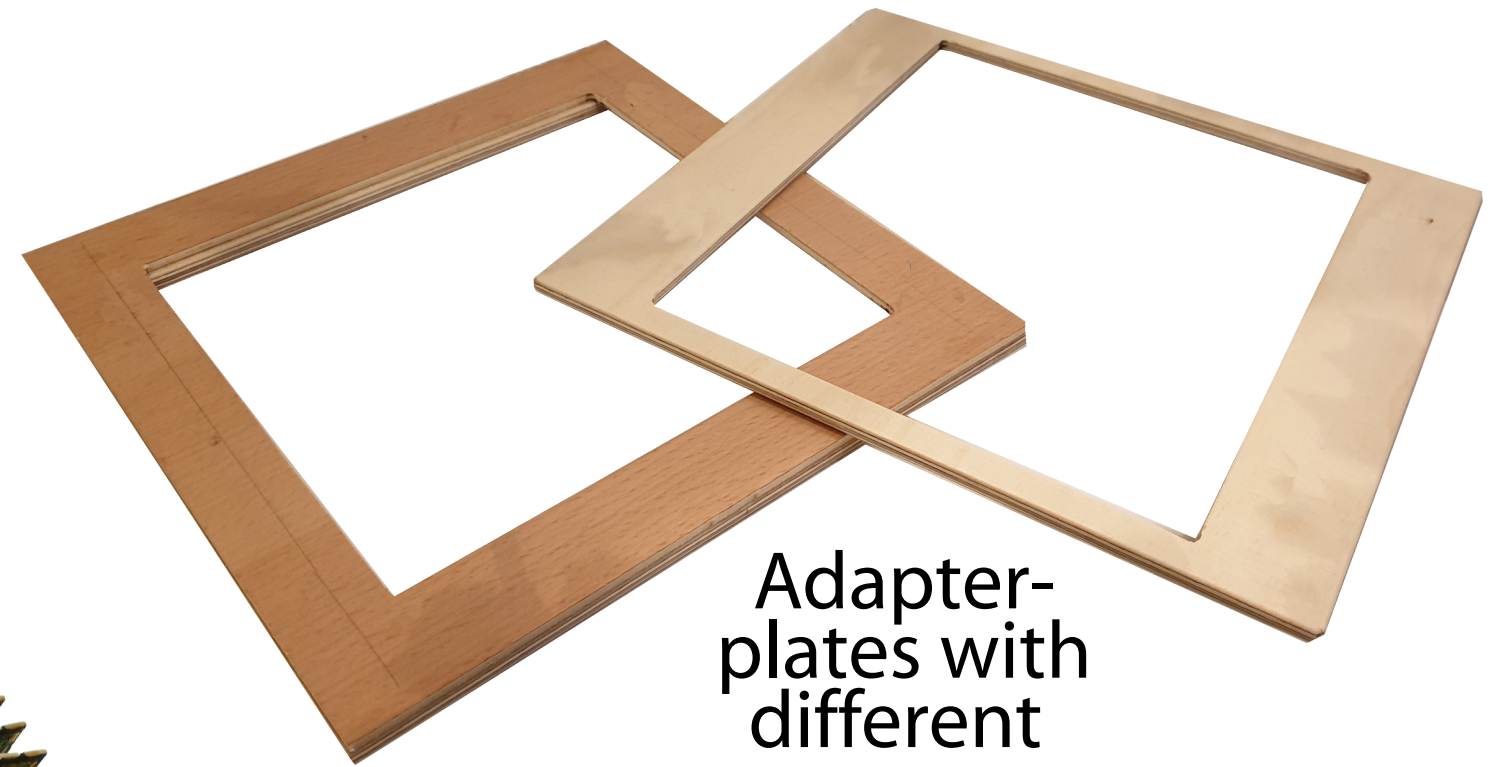
Turning Frame with  
Adapter Plate below  
turned

Aluminum frame  
as support for  
the adapter plates



# AKKÖtune BANDONEON

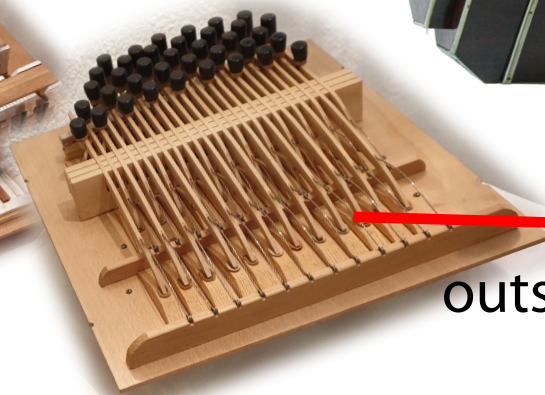
## Turning Frame



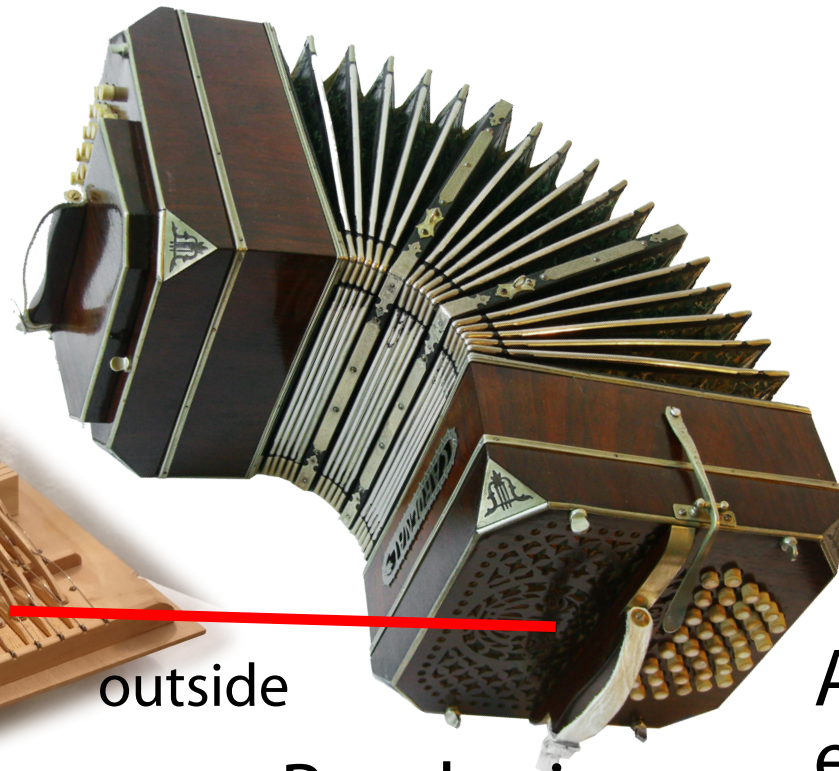
Adapter-plates with different cut-outs

Sound Boards

inside

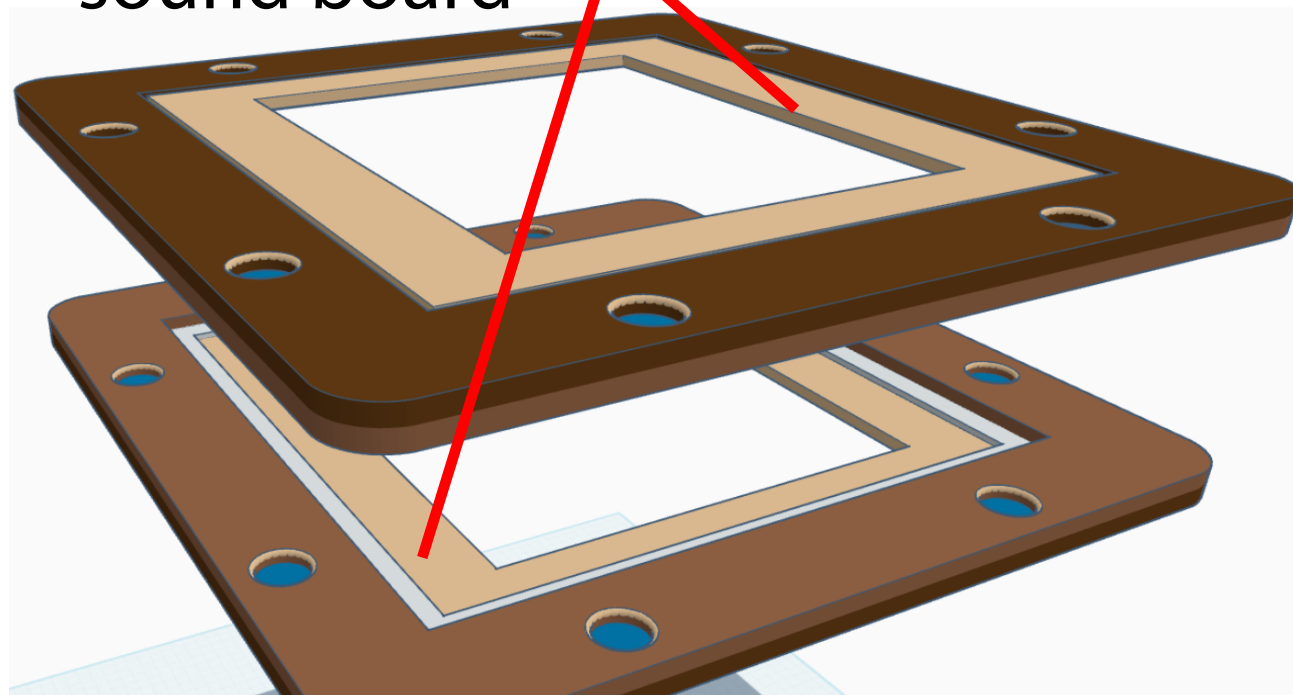


outside



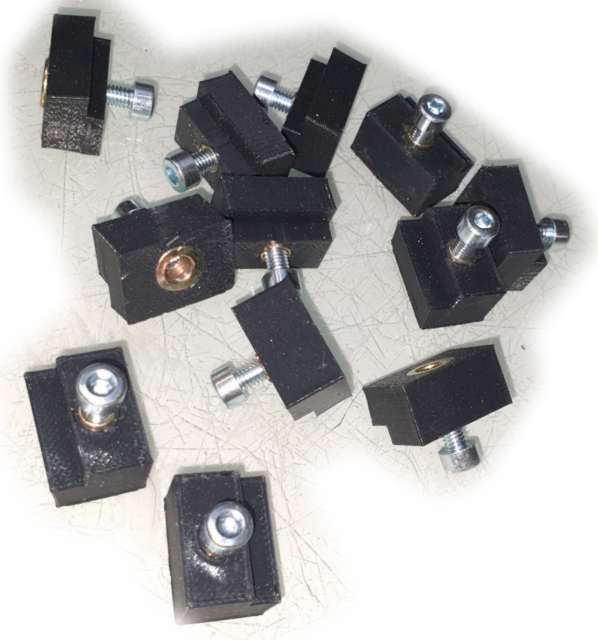
Bandonion

Adapter plate for sound board



As the sound boards are different for each instrument, the adapter plates for mounting in the turning frame need individually made cut-outs.

Both the adapter plates as well as the sound boards are pressed together with special clamps





# AKKÖtune BANDONEON BlowBox

The BlowBox is located in the bottom chamber of the basic appliance and generates electronically controlled blowing and suction air flow.

Cover for shielding of direct airflow onto the reed plates

**False bottom** with air vent for blowing and suction air

Control panel with lateral connectors for accessories

printed circuit board inside the control panel with electronics

**BlowBox** in the floor chamber to generate pressure and negative pressure above the false floor

Inlet and outlet holes for the blowing/suction air

Luftstrom

Base Unit  
**Bottom chamber**  
(shown transparent)

12V DC  
input

